

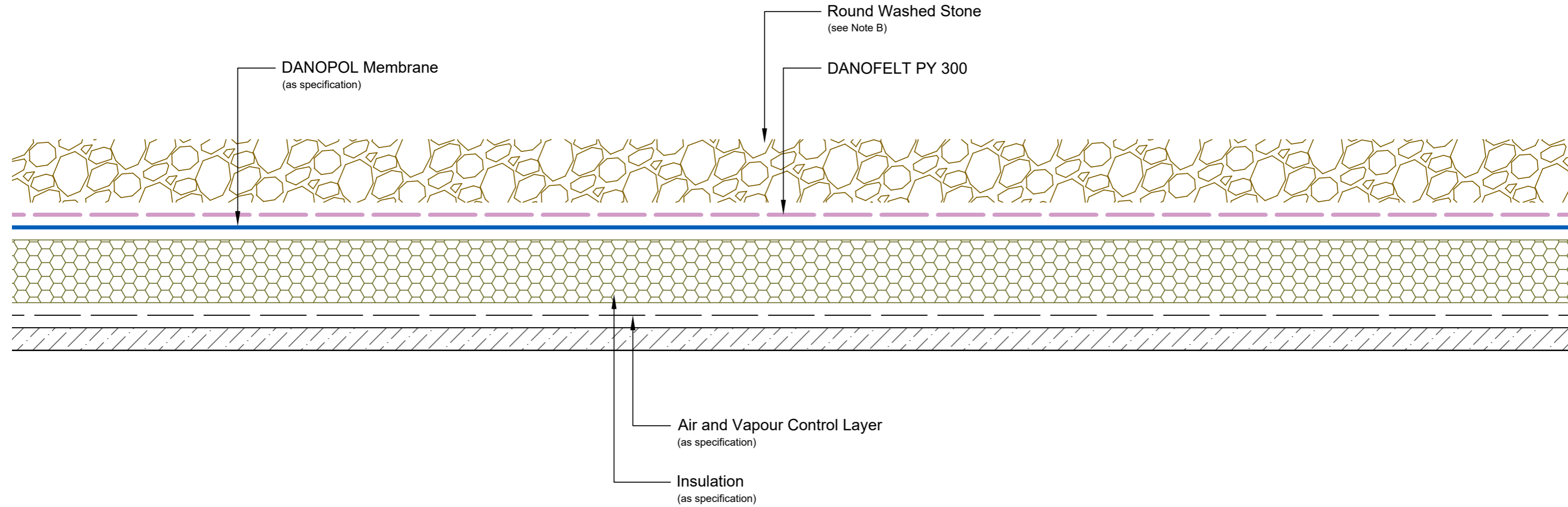
Disclaimer: Drawings produced by DANOSA UK should be considered non-scalable and for illustrative purposes only. Issued design principals form instructions for the installation of DANOSA UK materials only and should be considered as part of an overall design rather than in isolation. Product 'Technical Datasheets' are available for all DANOSA UK products and should be consulted in conjunction with all issued DANOSA UK installation instructions. Drawings are subject to copyright and should not be reproduced without permission.

**Drawing Notes:**

Structural substrates shown in this drawing are for illustrative purposes only.

**Note A:**

Stone ballast should be a minimum of 50mm depth. Stones should be round, 20-40mm in diameter and include no sharps.



<b>Drawing Number:</b> DUK-S-(G)-201W	<b>Revision:</b> 00
<b>Date Drawn:</b> March 2017	<b>Author:</b> SL

**Drawing Title:**  
Typical Cross Section with Stone Ballast  
DANOPOL® Single Ply Membranes - Warm Roof



**Building together**

**DANOSA UK Limited**

Tel: 0845 074 0553 | [www.danosa.co.uk](http://www.danosa.co.uk) | [uktechnical@danosa.com](mailto:uktechnical@danosa.com)