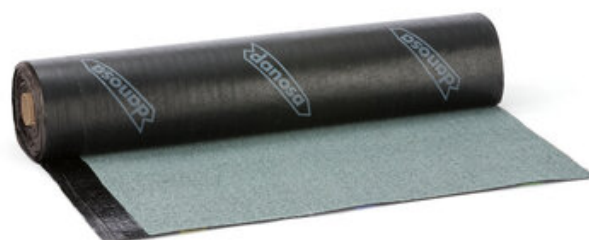




GLASDAN 40/GP ERF ELAST

SBS elastomeric 4 kg/m² capping sheet. Torch Applied.



BBA 10/4787 (1)



ETE 06/0062

GLASDAN 40/GP ERF ELAST. is a waterproofing bituminous sheet with self-protected surface of 4.0 kg/m². Composed of a fibreglass reinforcement, covered on both sides with SBS modified bitumen mastic. On the upper side of the sheet, mineral protection is used as protective material. The anti-adhesive material used on the lower side is polyethylene film.

Presentation

- Length (cm): 1000
- Width (cm): 100
- Colour: Green
- Thickness (mm): 2.5 (SOLAPO)
- Product code: 141061

Technical Data

Concept	Value	Standard
Mass per unit area (nominal) (kg/m ²)	4	-
External fire behaviour	Broof(t1)	UNE-EN 1187; UNE-EN 13501-5
Durability flexibility	-5 ± 5	-
Creep durability (°C)	100 ±10	UN-EN 1110
Elongation at break longitudinal (%)	>1	UNE-EN 12311-1
Elongation at transverse break (%)	>1	UNE-EN 12311-1

Concept	Value	Standard
Water vapour resistance factor (μ)	20.000	UNE-EN 1931
Low temperature flexibility ($^{\circ}\text{C}$)	<-15	UNE-EN 1109
Reaction to fire	E	UNE-EN 11925-2; UNE-EN 13501-1
Resistance to static loading (kg)	PND	UNE-EN 12730
Resistance to root penetration	No pasa	prEN 13984
Longitudinal tensile strength (N / 5cm)	350 \pm 100	UNE-EN 12311-1
Transverse tensile strength (N / 5cm)	250 \pm 100	UNE-EN 12311-1
Longitudinal resistance to tearing (nail shank) (N)	PND	UNE-EN 12310-1
Transversal resistance to tearing (nail shank) (N)	PND	UNE-EN 12310-1
Resistance to impact, A (mm)	PND	UNE-EN 12691
Joint Strength: Welding Shear	PND	UNE-EN 12317-1
Hazardous substances	PND	-
Resistance to root penetration	No pasa	prEN 13984

Additional Technical Data

Concept	Value	Standard
Density (kg/m^3)	1600	-
Adhesion of granules (%)	<30	UNE-EN 12039
Dimensional stability at elevated temperatures (longitudinal) (%)	PND	UNE-EN 1107-1
Dimensional stability at high temperatures (transversal) (%)	PND	UNE-EN 1107-1
Creep resistance at high temperatures ($^{\circ}\text{C}$)	>100	UN-EN 1110

Environmental Information

Concept	Value	Standard
Post-consumer recycled content (%)	35	-
Manufactured in	Fontanar - Guadalajara (España)	-

Standards and Certification

- In accordance with the UNE-EN 13707 standard 'Flexible sheets for waterproofing - Reinforced bitumen sheets for roof waterproofing - Definitions and characteristics'.
- Complies with CE marking requirements.
- DA 39/2013.
- DTA 5/09-2088 "Glasdan ELAST-Esterdan ELAST-Polydan ELAST".
- DTA "Esterdan FM".
- ETE 06/0062 "Esterdan Plus FM Bilayer".
- EOTA Guide 006.

Scope

- Self-protected non-accessible roofs: Multilayer waterproofing membrane capsheet with mineral self-protection.
- Capsheet in two-layer membranes with mineral self-protection.

Advantages & Benefits

- The mineral finish gives the membrane UV resistance.
- The SBS type elastomeric polymer modified bitumen mastic provides much better performance in terms of high and low temperature behaviour, elasticity and resistance to ageing compared to oxyasphalt sheets, which leads to a longer durability of the membrane and a higher safety of the waterproofing membrane.
- Fibreglass felt reinforcement has the following advantages: High dimensional stability, low thermal variation and easy adaptability.
- Allows for working with molten asphalt.

Instruction for Use

Top sheet of multi-layer waterproofing membranes with mineral self-protection.

The sheet is laid in the same direction as the bottom sheet, shifting the overlap line by approximately half of the roll. The sheet is fully welded to the bottom sheet with a blowtorch. The overlaps are to be welded, and will be 8 cm in both the longitudinal and transverse directions. To join the transverse overlap at the ends of the rolls, it is necessary to heat the transverse edge of the lower sheet in a strip of 8-10 cm beforehand, removing or embedding the protective aggregate in the bituminous mass and then welding the end of the next piece.

Indications and Important Recommendations

- In case of new construction and renovation, possible chemical incompatibilities with APP plastomer-modified bitumen sheets shall be taken into account.
- In case of refurbishment, chemical incompatibilities with old waterproofing systems consisting of PVC membranes, modified tar-based mastics or any other, shall be taken into account, and it may be necessary to remove them completely or to use suitable separating layers.
- On exposed self-protected roofs, occasional water retention that could lead to sediment accumulation and damage to the waterproofing membrane shall be avoided.
- This product may form part of a waterproofing system, so all the documents referred to in the Danosa Solutions Manual must be taken into account, as well as all the regulations and legislation that must be complied with in this respect.
- Self-protected sheets finished in light colours perform better thermally.

- Self-protected sheets in coloured mineral or ceramic granules may have different colour shades depending on the different production batches. The mineral granule may darken naturally over time.
- Not to be used in a single-layer waterproofing system.
- Not suitable as cap sheet on green roofs; use GARDEN variant.
- Possible incompatibility between thermal insulation and waterproofing shall be checked.
- Polyurethane foam shall not be sprayed directly on top of the waterproofing without the use of a suitable separating layer (geotextiles, mortar layers, polyethylene film, etc).

Maintenance Recommendations

- Please refer to DANOSA UK Technical Statement 'Flat Roof Waterproofing – Cleaning and Maintenance Recommendations'

Handling, storage and preservation

- Before moving the pallet, check the condition of the shrink-wrap and reinforce if necessary.
- The product must be stored in a dry place protected from rain, sun, heat and low temperatures.
- The product must be stored in an upright position.
- The product will be used on a first-come, first-served basis.
- This product is not toxic or flammable.
- NOTE: For more information on the Danosa systems in which this product is used, please see the document "Waterproofing Solutions".
- Waterproofing work should not be carried out when the ambient temperature is lower than +5°C for hot air welding.
- Waterproofing work must not be carried out when weather conditions may be detrimental, in particular when it is snowing or there is snow or ice on the roof, when it is raining or the roof is wet, surface dampness >8% according to NTE QAT, or when a strong wind is blowing.
- For high storage, the racks must have three cross members, or braces under the wooden pallet skids.
- For handling with a crane, use a protective net as indicated on the pallet label.
- Danosa recommends consulting the safety data sheet for this product, which is permanently available at danosa.com, Knowledge Portal, or it can be requested from our Technical Department.
- In all cases, the Occupational Safety and Hygiene standards, as well as the standards of good construction practice, must be taken into account.

Notice

- The information contained in this document and any other advice provided, are given in good faith, based on DANOSA's current knowledge and experience when products are properly stored, handled and applied, in normal situations and in accordance with the recommendations of DANOSA. The information applies only to the application (s) and the product (s) to which reference is expressly made. In case of changes in the parameters of the application, or in case of a different application, consult the DANOSA Technical Service before using the DANOSA products. The information contained herein does not exonerate the responsibility of the building agents to test the products for the application and intended use, as well as their correct application in accordance with current legal regulations. The product images used in our communications are indicative and may differ slightly in color and aesthetic appearance in relation to the final product. Orders are accepted in accordance with the terms of our current General Sales Conditions. DANOSA reserves the right to modify, without prior notice, the data reflected in this documentation. Website: **www.danosa.com** E-mail: **info@danosa.com** Telephone: **+34 949 88 82 10**