

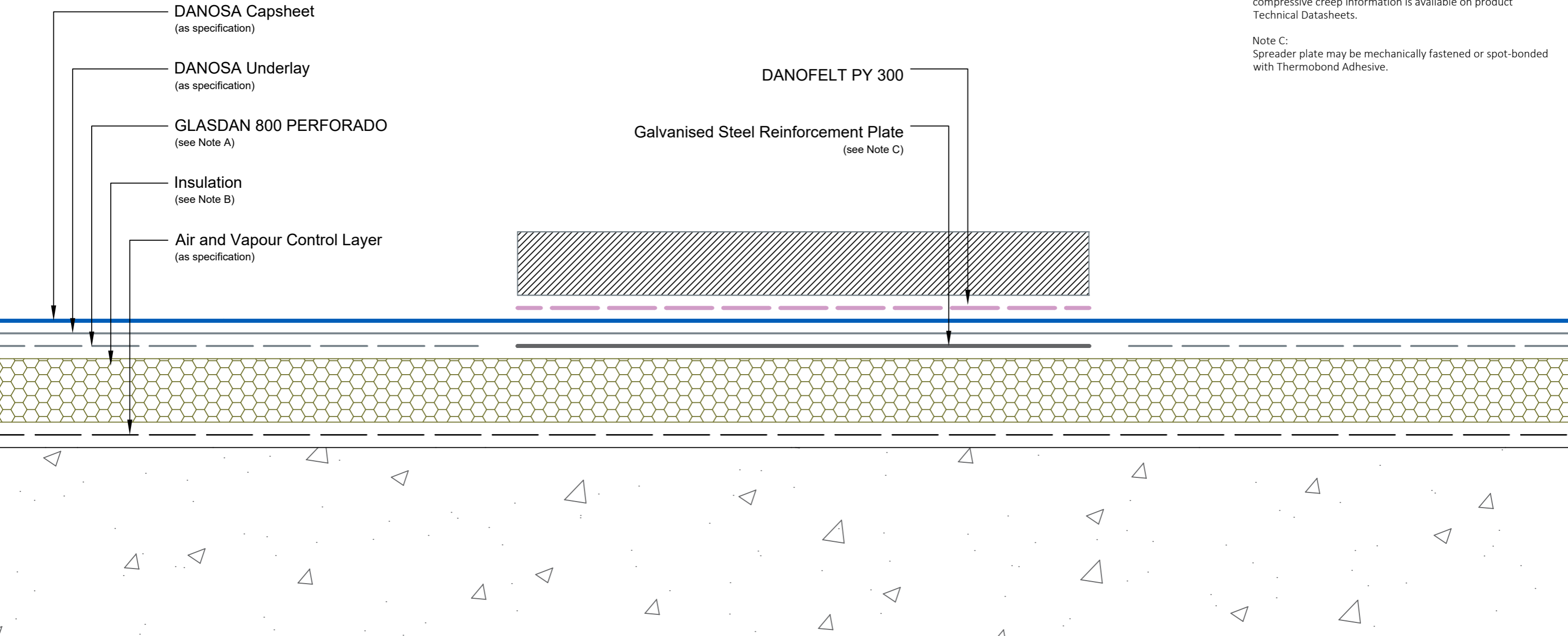
Drawing Notes:

All substrates should be primed or prepared in accordance with the project specification. Structural substrates shown in this drawing are for illustrative purposes only.

Note A:
Where a full bond to the substrate is required, or where ESTERDAN 30 P ELAST SEMIADHESVIO is used as the underlay, GLASDAN 800 PERFORADO does not form part of the system.

Note B:
The selected insulation should be suitable to withstand the anticipated live and dead loadings. Compressive strength and compressive creep information is available on product Technical Datasheets.

Note C:
Spreader plate may be mechanically fastened or spot-bonded with Thermobond Adhesive.



Drawing Number: DUK-B-(G)-347W	Revision: 01
Date Drawn: February 2019	Author: SL

Drawing Title:
Heavy Duty Protection
Reinforced Bitumen Membranes - Warm Roof



Building together

DANOSA UK Limited

Tel: 0845 074 0553 | www.danosa.co.uk | uktechnical@danosa.com