

Disclaimer: Drawings produced by DANOSA UK should be considered non-scalable and for illustrative purposes only. Issued design principals form instructions for the installation of DANOSA UK materials only and should be considered as part of an overall design rather than in isolation. Product 'Technical Datasheets' are available for all DANOSA UK products and should be consulted in conjunction with all issued DANOSA UK installation instructions. Drawings are subject to copyright and should not be reproduced without permission.

Drawing Notes:

Structural substrates shown in this drawing are for illustrative purposes only.

All DANOPOL membrane hot-air welds should be between 30-40mm. Overlaps should provide sufficient cover to accommodate this requirement.

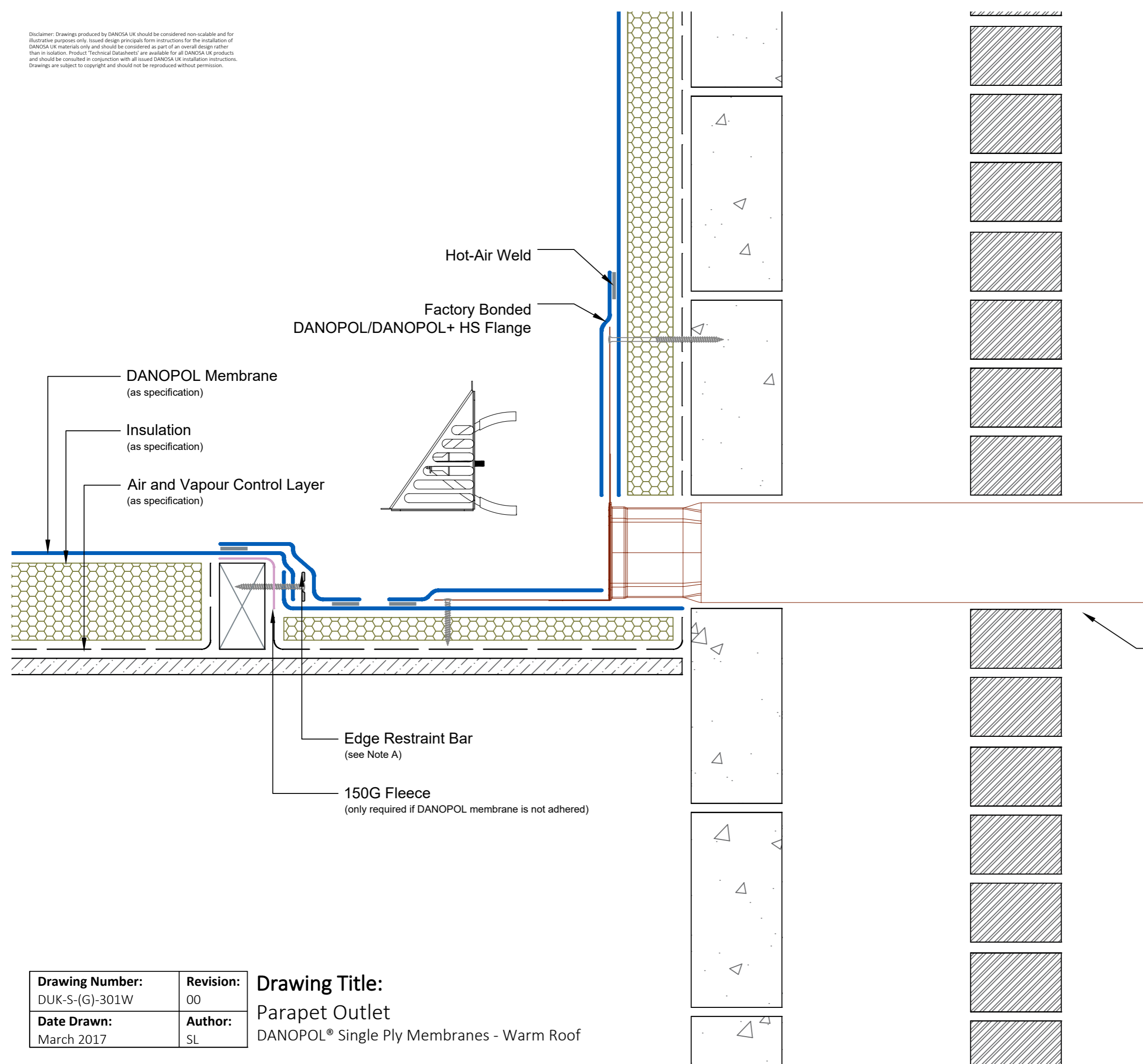
Parapet outlets require a head of water in order to function effectively, so are best located within a gutter or localised sump.

Parapet outlets should be supplied and installed with a suitable outlet guard as determined by the DANOSA flow rate calculation.

DANOSA parapet outlets are supplied with a 600mm spigot.

Note A:
Edge restraint bar should be mechanically fastened at 200mm centres.

Important Note:
External finishes fall outside of DANOSA specification.



Drawing Number: DUK-S-(G)-301W	Revision: 00
Date Drawn: March 2017	Author: SL

Drawing Title:
Parapet Outlet
DANOPOL® Single Ply Membranes - Warm Roof



Building together

DANOSA UK Limited

Tel: 0845 074 0553 | www.danosa.co.uk | uktechnical@danosa.com