

Drawing Notes:

Structural substrates shown in this drawing are for illustrative purposes only.

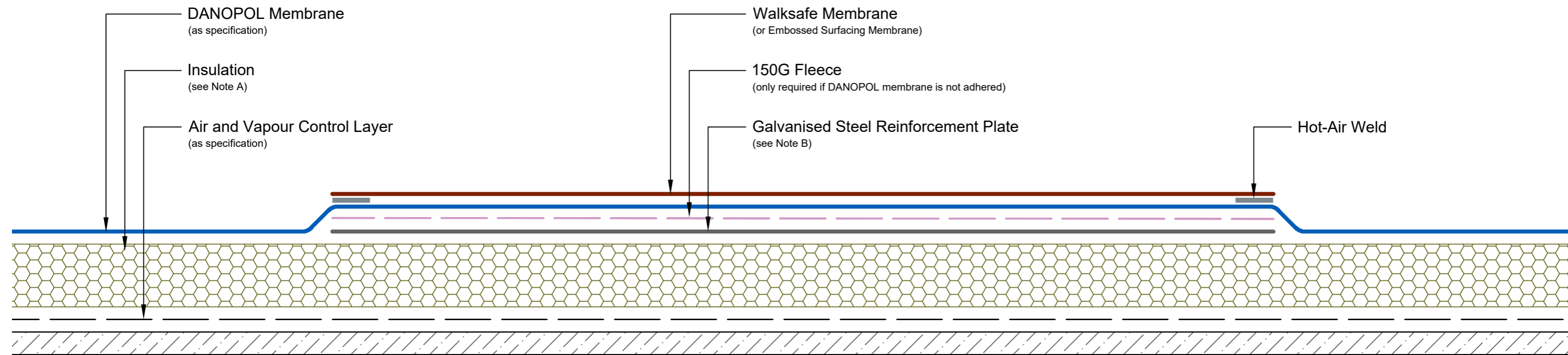
All DANOPOL membrane hot-air welds should be between 30-40mm. Overlaps should provide sufficient cover to accommodate this requirement.

Note A:

The selected insulation should be suitable to withstand the anticipated live and dead loadings. Compressive strength and compressive creep information is available on product Technical Datasheets.

Note B:

Spreader plate may be mechanically fastened or spot-bonded with Thermobond Adhesive.



Drawing Number: DUK-S-(G)-345W	Revision: 00
Date Drawn: March 2017	Author: SL

Drawing Title:
Reinforced Walkway
DANOPOL® Single Ply Membranes - Warm Roof



Building together

DANOSA UK Limited

Tel: 0845 074 0553 | www.danosa.co.uk | uktechnical@danosa.com