



**THE MOST ADVANCED RANGE  
OF LIQUID SOLUTIONS &  
TECHNICAL MORTARS**  
FOR REHABILITATION AND  
NEW CONSTRUCTION





# LIQUID WATERPROOFING SOLUTIONS AND TECHNICAL MORTARS FOR REHABILITATION AND NEW CONSTRUCTION

FLAT ROOFS

TERRACES AND  
BALCONIES

SWIMMING POOLS  
AND TANKS

KITCHENS AND  
BATHROOMS

BURIED STRUCTURES  
AND LIFT PITS

## WATERPROOFING

### FILLERS AND ADHESIVES

#### ELASTIC FILLERS

ELASTYDAN® PU 40 ..... 4

### PREPARED MORTARS

#### SPECIAL MORTARS

DANOCRET® Parking ..... 4

### COATING

#### WATERPROOFING OF ROOFS

##### ACRILIC BASE

REVESTIDAN® Cool Roofing ..... 5

REVESTIDAN® Reimper ..... 5

REVESTIDAN® Fiber ..... 5

#### LIQUID WATERPROOFING PRODUCTS

##### POLYURETHANE BASE. DANOPUR SYSTEM

DANOPUR® HT Gris ..... 6

DANOPUR® PT ..... 6

DANOPUR® LT Gris ..... 6

DANOPUR® LT Transparente ..... 6

## FAÇADE WATERPROOFING

REVESTIDAN® Proof S ..... 7

REVESTIDAN® Proof Repell ..... 7

REVESTIDAN® Proof Cer ..... 7

## WET AREAS WATERPROOFING

REVESTIDAN® Indoor ..... 7

## AUXILIARIES

### PRIMERS

DANOPRIMER® W ..... 8

DANOPRIMER® PU ..... 8

DANOPRIMER® PU2K ..... 8

DANOPRIMER® RPU ..... 9

DANOPRIMER® EP ..... 9

### ARMATURES

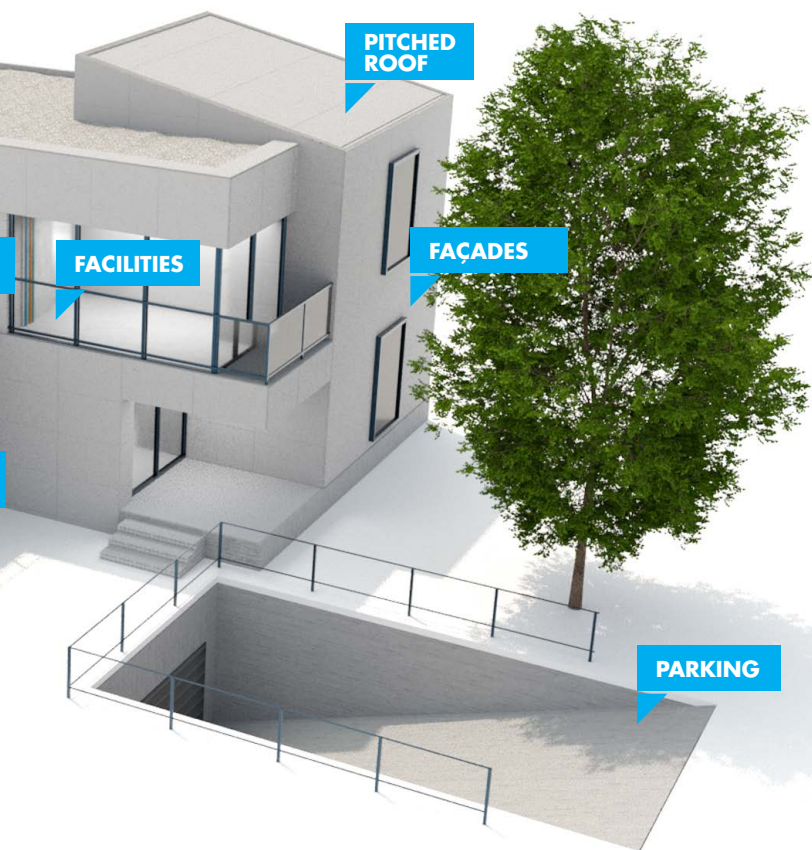
DANOTHERM® MALLA 160 ..... 10

MALLA FV 60 ..... 10

DANOBAND® Butyl ..... 10

## CLEANING

DANOCLEAN® Antifungi ..... 10



## TECHNICAL MORTARS FOR NEW CONSTRUCTION AND REHABILITATION

### CEMENTITIOUS ADHESIVE

ARGOCOLA® Élite 100 .....	12
ARGOCOLA® Élite 200 .....	12
ARGOCOLA® Élite 300 .....	12
ARGOCOLA® Élite 400 .....	13
ARGOCOLA® Élite 500 .....	13
ARGOCOLA® Élite 600 .....	13
ARJUNT® Universal.....	13

### WATERPROOFING MORTARS

DANOCRET® Protect 1C .....	14
DANOCRET® Protect Hydro 1C.....	14
DANOCRET® Protect Flex 1C.....	15
DANOCRET® Protect Flex 2C.....	15
ARGOTEC® Obturador.....	15

### SELF-LEVELING MORTARS

ARGONIV® 020 Élite .....	16
ARGONIV® 120 Élite .....	16
ARGONIV® 420 Élite .....	16

## TECHNICAL MORTARS

ARGOTEC® Refractario .....	17
ARGOTEC® Rápido .....	17
ARGOTEC® Termo-acústico .....	17

## DANOTHERM® ETICS SYSTEM..... 18

ARGOTEC® Fixtherm Élite NetZero.....	19
ARGOTEC® Fixtherm Élite .....	19
ARGOTEC® Hermetic .....	20
REVESTIDAN® SATE Fondo .....	20
REVESTIDAN® SATE Acrílico .....	20
REVESTIDAN® SATE SLX.....	20

## REPAIR MORTARS

ARGOTEC® Pasivador .....	21
ARGOTEC® Cosmético R2.....	21
ARGOTEC® Reparación R3.....	22
ARGOTEC® Reparación R4.....	22
ARGOTEC® Reparación R4 Fluido .....	22
ARGOTEC® Reparación R4 Rápido .....	22

## ANCHORING MORTARS

ARGOTEC® Grout 50 .....	23
ARGOTEC® Grout 50 Élite .....	23



# WATERPROOFING

## FILLERS AND ADHESIVES

### ELASTIC FILLERS

#### ELASTYDAN® PU 40

**Elastic polyurethane joint filler and multi-purpose adhesive. Watertightness and total adhesion.**

Waterproof filler effective as an elastic sealant in expansion joints and static sealant in roof finishes, building and civil works. Good adhesion to any type of substrate. Useful as a filling and sealing material for cracks, joints between partition walls, floors, paving, wall penetrations, tiles, etc



300 ml	Code 710703 (Box of 12 cartridges)
600 ml	Code 710710 (Box of 12 cartridges)

## PREPARED MORTARS

### SPECIAL MORTARS

#### DANOCRET® Parking

**Durable asphalt agglomerate, easy to apply even at low temperatures.**

Suitable for repairing potholes and ditches in road traffic areas.



25 kg	Code 311161
-------	-------------

## COATING

## ACRYLIC-BASED ROOF WATERPROOFING

**REVESTIDAN® Cool Roofing**

**Elastic waterproofing for roof rehabilitation. Improves thermal insulation. Maximum reflectance of the market white colour SRI=107.**

Waterproofing membrane that forms a continuous seamless membrane, compatible with self-protected asphalt membranes, on concrete and sheet metal substrates in roof refurbishment. Excellent adhesion to the substrate. High elasticity avoiding the opening of cracks. Dirt repellent, maintaining high reflectance.

5 kg	Code 725003
------	-------------

20 kg	Code 725013
-------	-------------

**REVESTIDAN® Reimper**

**Elastic waterproofing for roof rehabilitation.**

Waterproofing membrane that forms a continuous seamless membrane, compatible with self-protected asphalt membranes, on concrete and sheet metal substrates in roof refurbishment. Excellent adhesion to the substrate. High elasticity avoiding the opening of cracks.

	Red	Grey
5 kg	Code 725001	Code 725002
20 kg	Code 725011	Code 725012

**REVESTIDAN® Fiber**

**Fibre-based waterproofing for roof rehabilitation. Maximum efficiency in crack bridging.**

Highly elastic waterproofing product effective in bridging cracks in porous substrates as well as in polished surfaces with low porosity. Good adhesion to the substrate allowing it to be visited. Composite reinforced with high tenacity fibres

	White	Red	Grey	Terracotta
5 kg	C. 720053	C. 720034	C. 720043	C. 720024
20 kg	C. 720023	C. 720004	C. 720013	C. 720014

# POLYURETHANE BASED LIQUID WATERPROOFING PRODUCTS

## DANOPUR SYSTEM



### DANOPUR® HT Gris

One-component cold-applied liquid polyurethane membrane used in waterproofing and as part of DANOPUR systems.

One-component product, easy to apply, even when cold, with a continuous finish without joints. High elasticity and root resistance.

6 kg	Code 750703
------	-------------

25 kg	Code 750704
-------	-------------



### DANOPUR® PT

One-component cold-applied liquid polyurethane membrane used in waterproofing and as part of DANOPUR systems.

One-component product, easy to apply, even when cold, continuous finish without joints.

25 kg	Code 750705
-------	-------------



### DANOPUR® LT Gris

Top coat finish, semi-rigid, traffic resistant, aliphatic, UV stable, one component, abrasion resistant and used as protection for DANOPUR systems.

One-component product, easy to apply, even when cold, with seamless continuous finish. UV resistant.

10 kg	Code 750706
-------	-------------



### DANOPUR® LT Transparente

Semi-rigid, traffic resistant, aliphatic, UV-stabilised, single component, abrasion resistant top coat on heavily trafficked floors.

One-component product, easy to apply, even when cold, with seamless continuous finish. UV resistant.

10 kg	Code 750707
-------	-------------

## FAÇADE WATERPROOFING



### REVESTIDAN® Proof S

**Colourless water repellent for façades with immediate effect. Anti-Mould.**

Product that prevents water absorption by penetrating and protecting façades built with porous mineral materials (concrete, mortar, natural stone, ceramic and brick). It allows the breathability of the support as it does not create a film, preventing dirt from adhering. Reduces the appearance of efflorescence.

5 L Code 760081

20 L Code 760082



### REVESTIDAN® Proof Repell

**Colourless water-repellent for façades and pavements. Anti-Graffiti. Anti-mould. Breathable.**

Penetrates deep into the substrate, protects against water, oils, grease and graffiti, even on façades and floors with low to medium porosity. It allows the breathability of the substrate as it does not create a film, preventing dirt from adhering. Resistant to pedestrian traffic. Compatible with DANOCLEAN® Graffiti and Antifungi.

5 L Code 760091



### REVESTIDAN® Proof Cer

**Protective and anti-ageing consolidant based on acrylic resins. Solvent based.**

Product formulated with solvent-based acrylic resins for consolidation and protection of roofs, natural stones, concrete and clay. Characterized by excellent penetrating power, good adhesion, and fast drying.

5 L Code 760077

## WET AREAS WATERPROOFING



### REVESTIDAN® Indoor

**Elastic waterproofing for kitchens and bathrooms. Easy and fast adherence of coating.**

Waterproof coating with excellent elasticity, effective in bridging dynamic cracks in the substrate. Easy application on vertical and horizontal surfaces. Good adhesion even on damp substrates.

Particularly suitable as a layer prior to the application of a final coating.

5 kg Code 724001

20 kg Code 724002



# AUXILIARIES

## PRIMERS



### DANOPRIMER® W

Primer for the preparation and sealing of the substrate.

Maximum adherence and performance. Eco-friendly.

5 L

Code 750501



### DANOPRIMER® PU

Polyurethane primer with excellent adhesion and high impact resistance.

Easy application due to its low viscosity. Solvent free. Protects metal surfaces from corrosion and acts as a consolidant on cementitious substrates.

20 L

Code 750504



### DANOPRIMER® PU2K

Highly adhesive polyurethane primer for bituminous and mineral substrates.

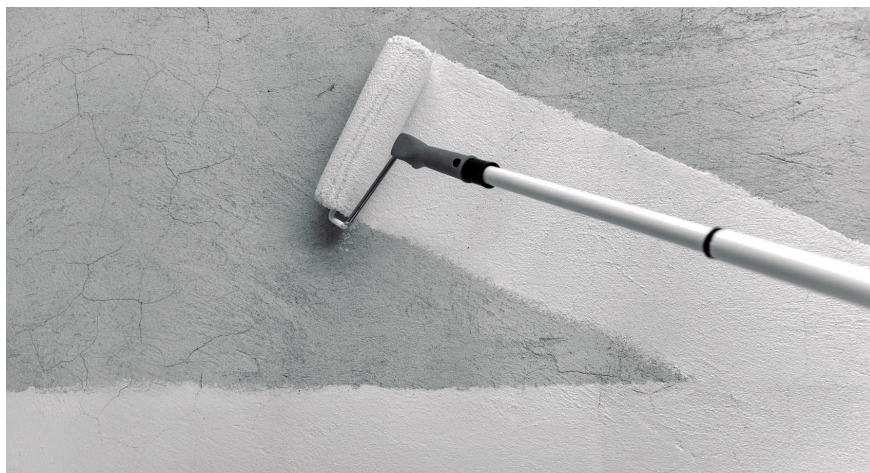
Two-component, solvent-free, low-viscosity polyurethane primer and binder, suitable for mineral substrates, compatible with DANOCOAT®, DANOPUR® and DANOFLOOR® systems.

Comp. A - 5,5 kg

Code 750518

Comp. B - 4,5 kg

Code 750519



## DANOPRIMER® RPU

**Bonding bridge resin for mortars and plasters.**

Water based bonding resin of a styrene-acrylic copolymer for application between different surfaces for anchoring of foundation mortars or plasters on low porosity and very smooth surfaces.

5 kg

Code 750828



## DANOPRIMER® EP

**Solvent-free, two-component epoxy primer.**

Suitable for porous substrates with residual moisture, fast curing at low temperatures, and compatible with DANOCOAT®, DANOPUR® and DANOFLOOR® systems.

Comp. A - 6,3 kg

Code 750508

Comp. B - 3,7 kg

Code 750514

## ARMATURES



### DANOTHERM® MALLA 160

Fibreglass reinforcement mesh that increases the tensile strength in the application of mortars, even in plasters and renders.

100% fibreglass mesh that increases tensile strength. Resistant to fire, cracking and alkalinity. Compatible with DANOCRET® mortars.

50 x 1m Code 770001

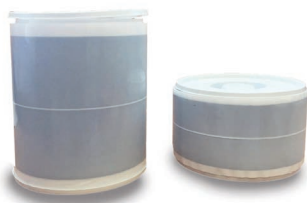


### MALLA FV 60

Fibreglass mesh with anti-alkaline treatment for reinforcement of mortar coatings.

Mesh made of 100% fibreglass that increases tensile strength. It is used in the application of waterproofing mortars, plasters and renders, prolonging the durability of coatings. Resistant to fire, cracking and alkalinity.

50 x 1m Code 770006



### DANOBAND® Butyl

Self-adhesive butyl adhesive tape for sealing joints in concrete and joints between vertical and horizontal surfaces.

15 m x 75 mm Code 770013

15 m x 150 mm Code 770014

## CLEANING



### DANOCLEAN® Antifungi

Effective cleaner of moss, fungus and lichen on roofs, terraces and façades.

Immediate and long-lasting effect.

5 L Code 760001

# TECHNICAL MORTARS

## FOR NEW CONSTRUCTION AND REHABILITATION



### HOW TO CHOOSE THE MOST SUITABLE CEMENTITIOUS ADHESIVE?

#### 1 WHAT AM I GOING TO PASTE?

Selection of the ceramic

#### 2 HOW AM I GOING TO PASTE IT?

Determination of the support

#### 3 LAYING OF THE CERAMIC

UNE EN 12004 and UNE 138002

#### ARGOCOLA ÉLITE RANGE

UNE EN 12004 and UNE 138002			Inside application					
Absorption	Ceramic format cm		Above wall			Above floor		
	Support		< 30	< 90	> 90	< 30	< 90	> 90
> 3%	Large format ceramics	Radiant heating	Argocola Élite 200 C1TE	Argocola Élite 300 C2TE	Argocola Élite 500 C2TES1	Argocola Élite 200 C1TE	Argocola Élite 300 C2TE	Argocola Élite 500 C2TES1
	Plasterboard							
	Cementitious based slabs							
	Mortar							
	Concrete							
< 3%	Tile / Stoneware	Radiant heating	Argocola Élite 300 C2TE	Argocola Élite 500 C2TES1	Argocola Élite 600 C2TES2	Argocola Élite 300 C2TE	Argocola Élite 500 C2TES1	Argocola Élite 600 C2TES2
	Wood type TECH P5							
	Large format ceramics							
	Plasterboard							
	Cementitious based slabs							
	Mortar							
	Concrete							
	Tile / Stoneware							
	Wood type TECH P5							
	UNE EN 12004 and UNE 138002							
Absorption	Ceramic format cm		Above wall			Above floor		
	Support		< 30	< 90	> 90	< 30	< 90	> 90
> 3%	Cementitious based slabs	Radiant heating	Argocola Élite 300 C2TE	Argocola Élite 500 C2TES1	Argocola Élite 600 C2TES2	Argocola Élite 300 C2TE	Argocola Élite 500 C2TES1	Argocola Élite 600 C2TES2
	Mortar							
	Concrete							
	Tile / Stoneware							
< 3%	Cementitious based slabs	Radiant heating	Argocola Élite 500 C2TES1	Argocola Élite 600 C2TES2	Argocola Élite 300 C2TE	Argocola Élite 500 C2TES1	Argocola Élite 600 C2TES2	
	Mortar							
	Concrete							
	Tile / Stoneware							

#### 4 ADHESIVES' CODE - UNE EN 12004

**C**

**Acronym for defining the type of adhesive** for thin-bed ceramic tile installation:

C: Cementitious adhesives  
D: Dispersion adhesive  
R: Reaction resin adhesive

**1/2**

**Reference to adherence**

1. Normal Adherence
2. Better Adherence

	c1	c2
Adherence	greater than or equal to (N/mm <sup>2</sup> )	
Initial	0,5	1
Water	0,5	1
Heat	0,5	1
Ice/melting	0,5	1
Open time 20 min.	0,5	0,5

**F**

**Fast setting cementitious adhesive** (minimum adherence 0,5 N/mm<sup>2</sup> before 24h)

**T**

**Reduced slipping** (maximum 0,5 mm)

**E**

**Extended open time** (minimum 30 min.)

**S1**

**Deformable** (deformability equal to or higher than 2,5mm and lower than 5mm)

**S2**

**Highly deformable** (deformability of 5mm or more)



## ARGOCOLA® Élite 100

**High performance cementitious C1T adhesive.**

ARGOCOLA ÉLITE 100 is a high-performance cementitious adhesive formulated with Portland cement, selected aggregates, organic additives and polymers that give it extraordinary workability and adhesion.

---

5 kg	Code 350179 (Grey)
25 kg	Code 350005 (Grey)
25 kg	Code 350004 (White)



## ARGOCOLA® Élite 200

**High performance cementitious C1TE adhesive.**

ARGOCOLA ÉLITE 200 is a high performance cementitious adhesive formulated with Portland cement, selected aggregates, organic additives and polymers that give it extraordinary workability and adhesion.

---

5 kg	Code 350178 (White)
25 kg	Code 350006 (White)
25 kg	Code 350258 (Grey)



## ARGOCOLA® Élite 300

**High performance cementitious C2TE adhesive.**

ARGOCOLA ÉLITE 300 is a high-performance cementitious adhesive formulated with Portland cement, selected aggregates, organic additives and polymers that give it extraordinary workability and adhesion.

---

25 kg	Code 350007 (White)
25 kg	Code 350008 (Grey)



## ARGOCOLA® Élite 400

**High-performance cementitious adhesive C2FTES1.**

ARGOCOLA ÉLITE 400 is a fast-setting, deformable cementitious adhesive formulated with special cements, selected aggregates, organic additives and polymers that give it an extraordinary capacity for deformation, adhesion and durability for rapid service. deformation capacity, adhesion and durability for a fast setting in service.

25 kg Code 350010



## ARGOCOLA® Élite 500

**High performance cementitious C2TES1 adhesive.**

ARGOCOLA ÉLITE 500 is a high performance deformable cementitious adhesive formulated with Portland cement, selected aggregates, organic additives and polymers that give it an extraordinary capacity for deformation, adhesion and durability.

25 kg Code 350011 (White)

25 kg Code 350310 (Grey)



## ARGOCOLA® Élite 600

**High-performance cementitious adhesive C2TES2.**

ARGOCOLA ÉLITE 600 is a high performance super deformable cementitious adhesive formulated with Portland cement, selected aggregates, organic additives and polymers that give it an extraordinary deformation capacity, adhesion and durability.

25 kg Code 350197 (White)



## ARJUNT® Universal

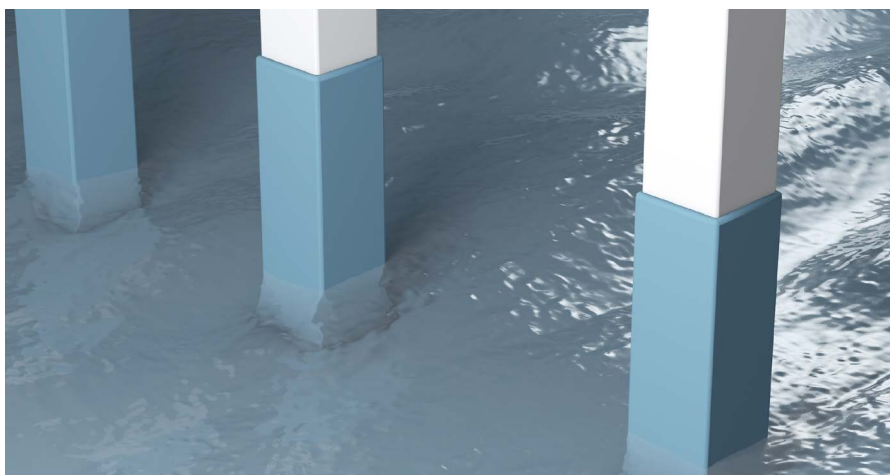
**Grouting mortar for ceramic tiles CG2 AW.**

ARJUNT UNIVERSAL is a coloured modified polymer mortar based on hydraulic binders, resins and additives, as well as incorporating a broad spectrum biocide agent that gives the product the necessary algacide and fungicide capacity for use in contact with water and humid areas.

5 kg

20 kg

\* See code according to colour of finish



Made  
ONLY of  
sulfate resistant  
cement

## DANOCRET® Protect 1C

**Mortar for surface protection and waterproofing of concrete.**

DANOCRET PROTECT 1C is a thixotropic, single-component, polymer modified mortar (PCC) for the surface protection and waterproofing of concrete, formulated on the basis of a mixture of hydraulic binders, selected aggregates and polymers that provide excellent adhesion and waterproofing capacity.

25 kg Code 350135 (White)

25 kg Code 350136 (Grey)



Made  
ONLY of  
sulfate resistant  
cement

## DANOCRET® Protect Hydro 1C

**Waterproofing mortar for the capillary network of concrete structures.**

DANOCRET PROTECT HYDRO 1C is a polymer modified mortar (PCC), single component for the waterproofing of concrete structures, formulated on the basis of a mixture of hydraulic binders, selected aggregates and hydro-reactive agents that provide excellent adhesion and waterproofing capacity.

20 kg Code 350248 (Grey)



## DANOCRET® Protect Flex 1C

**Flexible membrane for waterproofing concrete.**

DANOCRET PROTECT FLEX 1C is a flexible, single-component polymer modified mortar (PCC) for the surface protection and waterproofing of concrete, formulated on the basis of a mixture of hydraulic binders, selected aggregates and polymers that provide excellent elasticity and waterproofing capacity.

5 kg	Code 350181 (White)
20 kg	Code 350137 (White)
20 kg	Code 350247 (Grey)



## DANOCRET® Protect Flex 2C

**Flexible waterproofing mortar for swimming pools, water tanks and lift shafts. Applicable even on damp substrates.**

Elastic waterproofing membrane with excellent adhesion on roofs and unglazed substrates. Prevents cracks, damp due to condensation and efflorescence. High protection against saltpetre and seawater.

15 kg Comp. A+B	Code 721001
25 kg Comp. A	Code 721002
12.5 kg Comp. B	Code 721004



## ARGOTEC® Obturador

**Ultra-fast waterway plugging mortar.**

ARGOTEC OBTURADOR is an ultra-fast, single-component mortar for plugging waterways, formulated with a mixture of hydraulic conglomerates, selected aggregates that provide excellent adherence without a bonding bridge and high resistance.

5 kg	Code 350184
20 kg	Code 350139



## ARGONIV® 020 Élite

**Self-levelling mortar CT C35 F10 0 mm to 10 mm thick fast drying for low thicknesses.**

ARGONIV 020 is a self-levelling paste based on hydraulic binders, selected aggregates, polymers and chemical additives which give it outstanding pumping and levelling properties, as well as excellent mechanical properties in short times.

---

5 kg	Code 350185
25 kg	Code 350019



## ARGONIV® 120 Élite

**Self-levelling mortar CT C35 F10 5 mm to 30 mm thick fast drying for medium thicknesses.**

ARGONIV 120 ÉLITE is a self-levelling mortar based on hydraulic binders, selected aggregates, polymers and chemical additives that give it extraordinary pumping and levelling properties as well as excellent mechanical properties in short times.

---

25 kg	Code 350020
-------	-------------



## ARGONIV® 420 Élite

**Self-levelling mortar CT C40 F11 for thicknesses from 20 mm and upwards, fast drying for medium and thick thicknesses.**

ARGONIV 420 ÉLITE is a self-levelling mortar based on hydraulic binders, selected aggregates, polymers and chemical additives that give it outstanding pumping and levelling properties as well as excellent mechanical properties at short times and a surface finish suitable for aesthetic requirements.

---

25 kg	Code 350022
-------	-------------



## ARGOTEC® Refractario

**Refractory mortar for construction sites exposed to high temperatures.**

ARGOTEC REFRACTARIO is a refractory mortar formulated with a mixture of aluminous cement, selected aggregates and additives that provide excellent workability and mechanical performance resistant to high temperatures.

5 kg Code 350183

25 kg Code 350141



## ARGOTEC® Rápido

**Fast setting mortar for fasteners and anchors.**

ARGOTEC RÁPIDO is a fast-setting, single-component mortar, formulated with a mixture of hydraulic binders, selected aggregates and additives that provide excellent adhesion without bonding bridges and high initial strengths.

5 kg Code 350182

25 kg Code 350140



## ARGOTEC® Termo-acústico

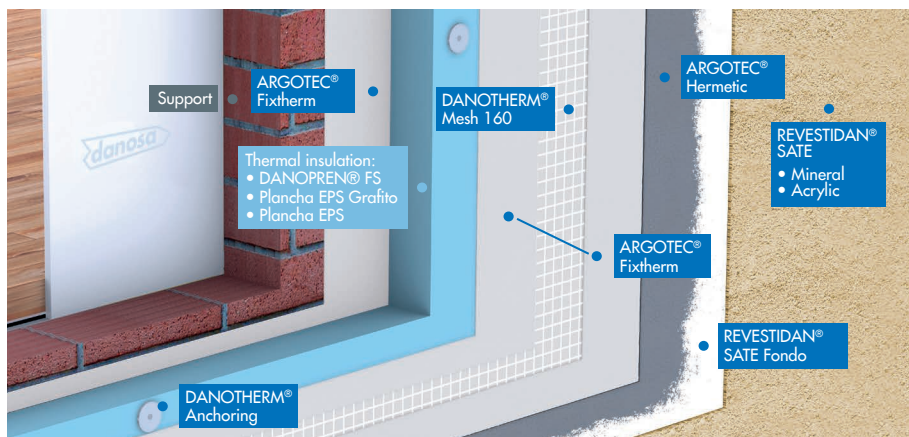
**Adhesive mortar for fixing mineral wool on the cladding.**

ARGOTEC TERMOACÚSTICO is an adhesive mortar for laying mineral wool on the enclosure, formulated with Portland cement, selected aggregates, polymers and fibres that provide excellent adherence and waterproofing.

25 kg Code 350196

# DANOTHERM® ETICS SYSTEM

SOLUTIONS WITH THERMAL INSULATION SYSTEMS FOR THE OUTSIDE

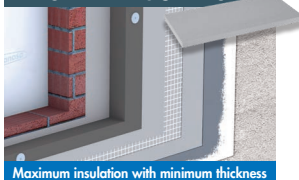


Three types of insulation to choose:

## DANOTHERM® XPS



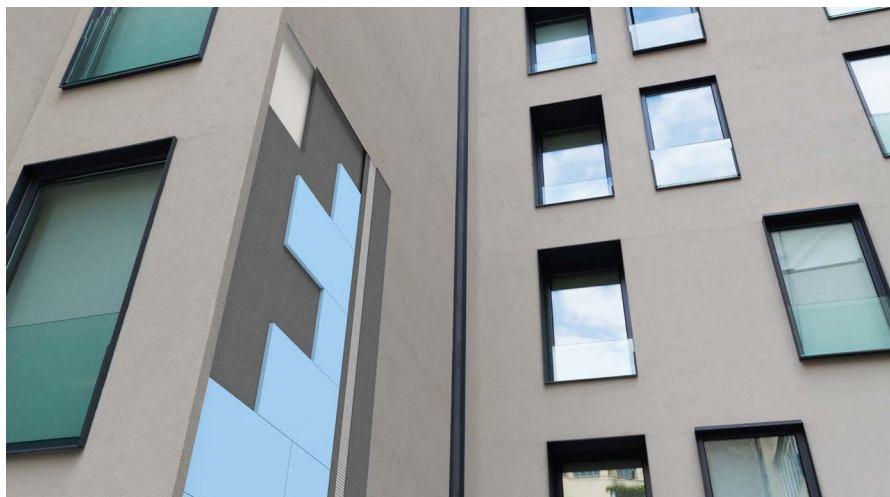
## DANOTHERM® EPS GRAFITO



## DANOTHERM® EPS



Visit our website  
[www.danothermsate.com](http://www.danothermsate.com)



## ARGOTEC® Fixtherm Élite NetZero

**Fixing mortar and coating of XPS, EPS and Mineral Wool boards for the external thermal insulation system (ETICS).**

ARGOTEC FIXTHERM ÉLITE NETZERO is a polymer-modified and shrinkage-compensated polymer modified, shrinkage-compensated mortar for bonding and fixing of expanded polystyrene, extruded polystyrene and mineral wool insulation boards, for the external thermal insulation system (SATE/ ETIC). It is formulated with Portland cement, selected aggregates, organic additives, fibres and synthetic resins that improve the workability, water retention, open time and adhesion of the mortar.

25 kg Code 350127



## ARGOTEC® Fixtherm Élite

**Mortero de fijación y revestimiento de placas de EPS y Lana Mineral para el sistema de aislamiento térmico por el exterior (ETICS).**

ARGOTEC FIXTHERM ÉLITE is a polymer modified PCC and shrinkage-compensated mortar for the adhesion and fixing of expanded polystyrene and mineral wool insulation boards for exterior thermal insulation systems (SATE/ETIC). It is formulated with Portland cement, selected aggregates, organic additives, fibres and synthetic resins that improve the workability, water retention, open time and adhesion of the mortar.

25 kg Code 350121



## ARGOTEC® Hermetic

**Cement-based airtight membrane for near-zero energy and Passivhaus buildings.**

Super-flexible, single-component, polymer-modified mortar (PCC) for bonding different materials, formulated with special polymers, binders and multifunctional fillers that give it extraordinary elasticity, airtightness, and adhesion to a wide range of substrates.

4 kg Code 350246



## REVESTIDAN® SATE Fondo

**Anchoring primer for the DANOTHERM ETICS system.**

Pigmented aqueous primer based on polysiloxane binders. Suitable for regulating the absorption of the substrate for finishes with REVESTIDAN SATE Acrylic. It has excellent anti-carbonation properties.

15 kg Code 720003 (White)

\* See colour code for colour finish



## REVESTIDAN® SATE Acrílico

**High performance acrylic mortar for decoration and protection of façades.**

Coating based on acrylic copolymer dispersions and inorganic fillers of different granulometry for waterproofing and decoration of façades.

25 kg Code 720001 (White)

\* See colour code for colour finish



## REVESTIDAN® SATE SLX

**High-performance siloxane acrylic mortar for façade decoration and protection.**

Coating manufactured with acrylic and polysiloxane copolymer dispersions, with inorganic fillers of different granulometry, which provide high water resistance and durability. Suitable for waterproofing and decorating facades and in finishes with high outdoor resistance and high hardness.

	White	Soft colours	Medium colours	Strong colours
25 kg	720068	720067	720069	720066



## ARGOTEC® Pasivador

**Anti-corrosion mortar and bonding coat for concrete reinforcement.**

ARGOTEC PASIVADOR is a single-component cementitious mortar for the protection of reinforcement against corrosion, formulated with hydraulic binders, mineral fillers, polymers and corrosion inhibitors that provide excellent adherence and passivating effect.

4 kg

Code 350243



## ARGOTEC® Cosmético R2

**Non-structural concrete repair mortar.**

ARGOTEC COSMÉTICO R2 is a thixotropic, single-component, polymer modified mortar (PCC), of high resistance and compensated retraction for non-structural repair of concrete elements, formulated with a mixture of hydraulic conglomerates, selected aggregates, polymers and fibres that provide excellent adherence and an aesthetic finish.

25 kg

Code 350125



## ARGOTEC® Reparación R3

### Concrete structural repair mortar.

ARGOTEC REPARACIÓN R3 is a thixotropic polymer modified mortar (PCC), single component, high strength, non-shrink, for structural repair of concrete elements, formulated based on a mixture of hydraulic binders, selected aggregates, polymers and fibres that provide excellent adhesion and mechanical properties.

5 kg	Code 350180
25 kg	Code 350142



## ARGOTEC® Reparación R4

### Concrete structural repair mortar.

ARGOTEC REPARACIÓN R4 is a thixotropic polymer modified mortar (PCC), single component, high strength, non-shrink, for structural repair of concrete elements, formulated based on a mixture of hydraulic binders, selected aggregates, polymers and fibres that provide excellent adhesion and mechanical properties.

25 kg	Code 350198
-------	-------------



## ARGOTEC® Reparación R4 Fluido

### Structural fluid repair mortar for concrete concrete En 1504-3.

ARGOTEC REPARACIÓN FLUIDO R4 is a single-component, high-strength, non-shrink, polymer-modified mortar (PCC) for the structural repair of concrete pavements, formulated with a mixture of hydraulic binders, selected aggregates, polymers and fibres that provide excellent adhesion and mechanical properties.

25 kg	Code 350144
-------	-------------



## ARGOTEC® Reparación R4 Rápido

### Structural repair fluid mortar made of rapid-setting concrete in 1504-3.

ARGOTEC REPARACIÓN R4 RÁPIDO is a thixotropic polymer modified mortar (PCC), single-component, fast setting and non-shrink, for structural repair of concrete elements, formulated based on a mixture of hydraulic binders, selected aggregates, polymers and fibres that provide excellent adhesion and mechanical properties.

25 kg	Code 350145
-------	-------------



## ARGOTEC® Grout 50

**Filling and anchoring mortar for steel reinforcements.**

ARGOTEC GROUT 50 is a cementitious mortar (CC), single-component, self-levelling, high-strength and shrinkage-compensated for all types of fillings and anchorages, formulated on the basis of a mixture of hydraulic conglomerates, selected aggregates and additives that provide excellent adherence and a great anchorage capacity.

25 kg Code 350133



## ARGOTEC® Grout 50 Élite

**Filling and anchoring mortar for steel reinforcements.**

ARGOTEC GROUT 50 ÉLITE is a cementitious mortar (CC), single-component, self-levelling, high-strength and shrinkage-compensated for all types of fillings and anchors, formulated based on a mixture of hydraulic binders, selected aggregates and additives that provide excellent adherence and rapid development of strength.

25 kg Code 350130

Discover a world of DANOSA solutions  
**www.danosa.com**

**DANOSA ESPAÑA**  
**Factory, Central Offices and Logistics Center**

Polígono Industrial. Sector 9.  
19290 Fontanar, Guadalajara, España  
Tel.: (+34) 949 888 210  
info@danosa.com

**DANOSA PORTUGAL**

Rua do Norte, Lugar da Quinta do Aduquete  
3100-342 Pombal, Portugal  
Tel.: (+351) 236 029 465  
portugal@danosa.com

**DANOSA MAROC**

14, Bd de Paris, 5ème Etage. Bureau n° 48.  
Casablanca, Maroc  
Tel.: (+212) 522 221 153  
maroc@danosa.com

**DANOSA MÉXICO**

Tel.: +00 52 155 356 769 52  
mexico@danosa.com

**DANOSA FRANCE**

12, Avenue Arago.  
91420 Morangis, France  
Tel.: (+33) 0 141 941 890  
france@danosa.com

**DANOSA UK**

Independence Unit 3, Stanbridge Road.  
PO9 2NS Havant, Hampshire, United Kingdom.  
Tel.: (+44) 8450 740 553  
uk@danosa.com

**DANOSA ANDINA**

Cra. 7 #82-66. Oficina 311  
Bogotá D.C., Colombia  
Tel.: (+57) 3173 729 559  
andina@danosa.com

**TIKIDAN**

Tikitar Estate, Village Road, Bhandup (West)  
400 078, Mumbai, India.  
Tel.: (+91) 2241 266 666  
info@tikidan.in



Download BIM libraries  
for products and systems

